

MONTHLY MEMBERSHIP PROGRESS REPORT

LOCATION VIRGINIA

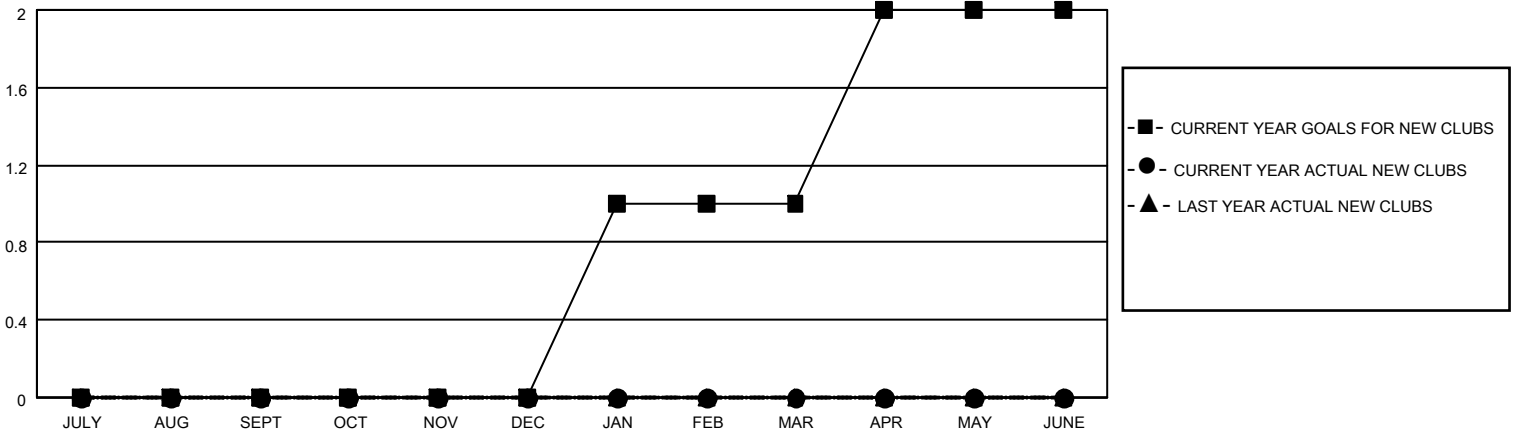
District 24 C

Results as of: 6/30/2023

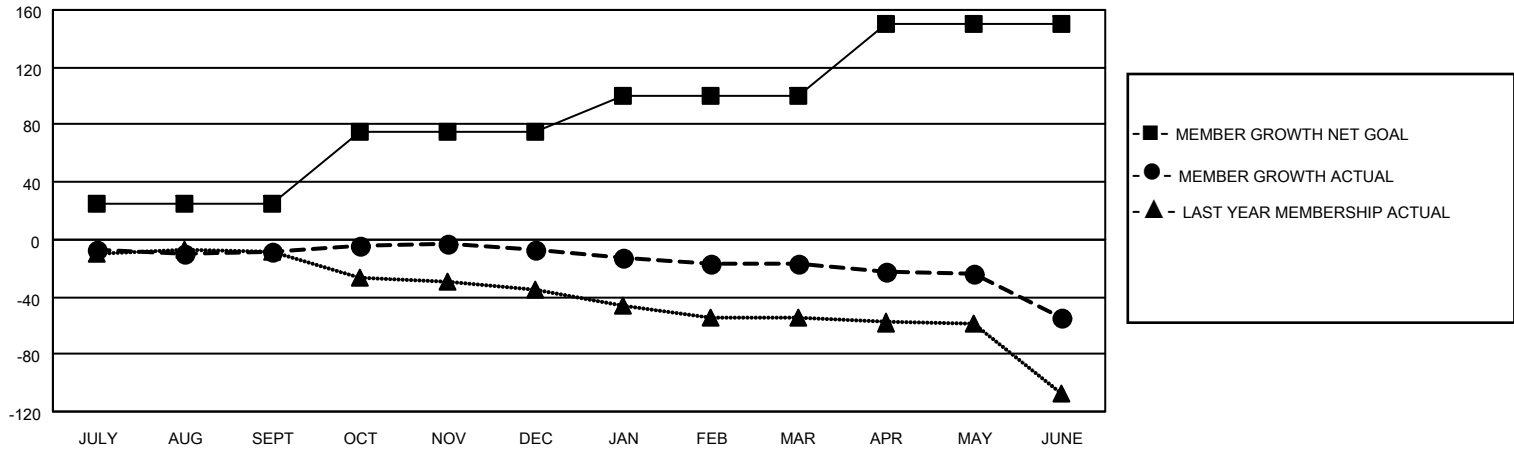
Clubs			
RESULTS FOR 2022-2023			
QUARTER	NEW CLUB GOAL	NEW CLUBS	DROPPED CLUBS
JULY/AUG/SEPT	0	0	0
OCT/NOV/DEC	0	0	1
JAN/FEB/MAR	1	0	0
APR/MAY/JUNE	1	0	4

Members			
RESULTS FOR 2022-2023			
QUARTER	MEMBER GROWTH NET GOAL	MEMBER GROWTH ACTUAL	DROPPED MEMBERS ACTUAL (including transfers)
JULY/AUG/SEPT	25	29	33
OCT/NOV/DEC	50	24	23
JAN/FEB/MAR	25	35	40
APR/MAY/JUNE	50	38	70

GOALS AND ACTUAL NEW CLUBS CUMULATIVE



GOALS AND ACTUAL MEMBERS CUMULATIVE



DROPPED CLUBS: 5

38 CLUBS OF 56 ADDED 1 OR MORE NEW MEMBERS

GENDER DISTRIBUTION

MALE	794 (64.19%)
FEMALE	443 (35.81%)
NON BINARY	0 (0.00%)
PREFER NOT TO ANSWER	0 (0.00%)

DROPPED MEMBERS

[CLICK HERE FOR CUMULATIVE MEMBERSHIP DATA](#)

DECEASED	33
CLUB CANCELLED	11
OTHER	122
TOTAL	166

TOTAL FAMILY UNIT MEMBERS 219

FAMILY MEMBERS PAYING HALF DUES 110